

RETAIL SPACE FOR LEASE

EUREKA-TAYLOR RETAIL CENTER

1801 Taylor Road, Roseville CA

- Next to In-N-Out Burger, Golfland Sunsplash and Brookfields Restaurant
- Backs up to Interstate 80
- Only 1/3 mile south of Sutter Medical Complex (around 1,500 employees) and near the Roseville Auto Mall
- Plentiful Parking

AVAILABLE SPACE

1,925 SF Space



TRAFFIC COUNTS

Taylor Road	18,000 ADT
Eureka Road	45,000 ADT
Interstate 80	157,000 ADT

DEMOGRAPHICS

	1 Mile	3 Miles	5 Miles
2014 Population	5,277	100,372	235,690
Median Household Income	\$73,662	\$72,869	\$78,163
Average Household Income	\$86,358	\$86,200	\$91,108

Stuart Snider
 ss@corecre.com
 916. 274. 4401
 CA DRE #01132016

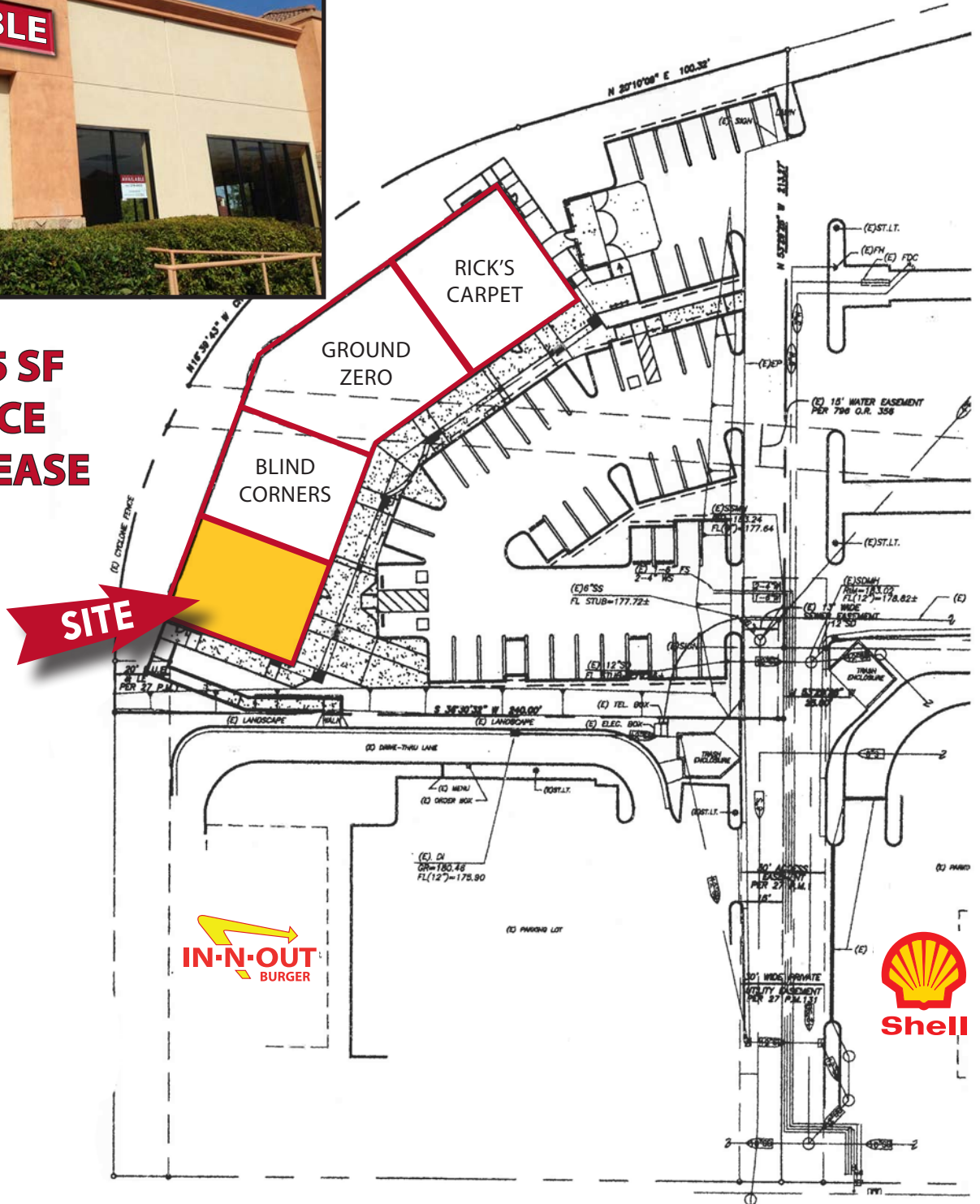
CORE Commercial
 2264 Fair Oaks Blvd. Suite 201
 Sacramento, CA 95825
 CA DRE #01904661

CORE
 COMMERCIAL

1801 TAYLOR STRIP: SITE PLAN



**1,925 SF
SPACE
FOR LEASE**



Stuart Snider
ss@corecre.com
916.274.4401
CA DRE #01132016

CORE
COMMERCIAL

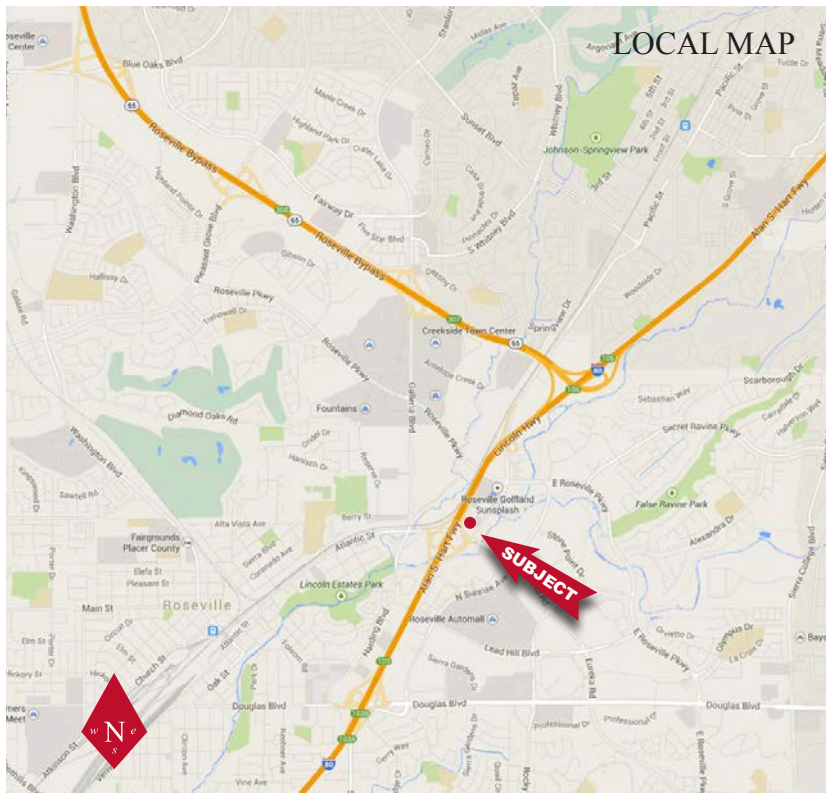
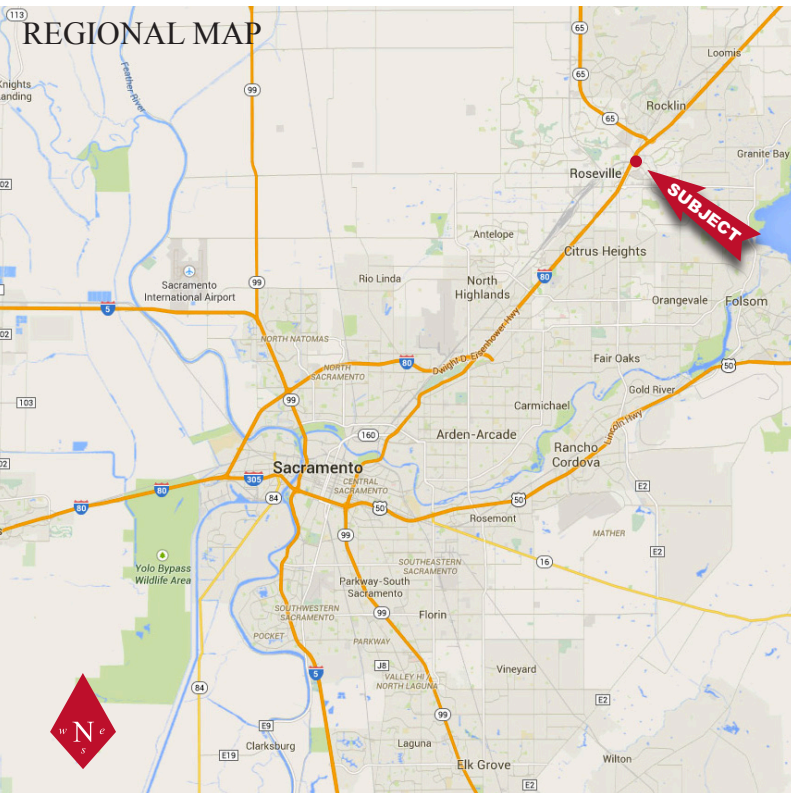
1801 TAYLOR STRIP: AERIAL TRADE MAP



Stuart Snider
 ss@corecre.com
 916. 274. 4401
 CA DRE #01132016

CORE
 COMMERCIAL

1801 TAYLOR STRIP: AREA MAPS & BUILDING PHOTO



FREEWAY VISIBILITY



IN-N-OUT ADJACENT DRIVE-THRU



COPYRIGHT © 2014. ALL RIGHTS RESERVED. CORE Commercial ("Agent"), CA DRE Lic. 01904661, has presented this brief, selected information pertaining to the Property and shall not be considered all-inclusive or unchanged since the date of preparation. No warranty as to the accuracy or completeness is expressed or implied. The information has been received from sources believed to be reliable but is not guaranteed. Prospective Tenants should independently verify each item of information and have the same reviewed by its tax advisor and/or legal counsel. The Property is being leased on an "as-is, where-is" and "with all faults" basis unless otherwise specified.

